

NOCCHI FP/Multi EVO-A

ELECTRIC PUMPS WITH ELECTRONIC CONTROL AND PROTECTION DEVICE

NEW2016
PENTAIR

HIGH HYDRAULIC PERFORMANCE

Automatic unit to increase pressure in domestic water supply system. Composed of a single phase electric pump type **Multi EVO-A** and the FLUSSCONTROL BASIC electronic device, which regulates the automatic operation of the pump and protects it if there is a lack of water. It is supplied pre-

assembled, wired, ready for installation and use.

- High hydraulic pressure and flow performance
- Minimum energy consumption
- Extremely silent operation

ADVANTAGES

- Reduces pressure waves
- Replaces traditional expansion tank system
- Does not require any maintenance
- Protection if there is a lack of water
- Very simple to install and ready to use (Plug & Play)

SPECIFICATIONS:

PUMP

- Type of liquid: clean water with no suspended solids or abrasive material
- Maximum liquid temperature 50°C
- Maximum recommended suction height: 6m with foot valve
- Maximum operating pressure 8 bar

MOTOR

- Enclosed, externally ventilated (TEFC)
- 2 poles, 50 Hz (n=2850 rpm)
- Protection class IP 55
- Insulation class F
- Single phase power supply with permanently inserted condenser and thermal protection incorporated into motor winding
- Three-phase power supply with external protection supplied by the user



APPLICATIONS

- Lifts and distributes water in domestic systems
- Pressurization systems
- Cleaning systems
- Irrigation
- Re-utilization of rainwater



NOCCHI FP/Multi EVO-A

ELECTRIC PUMPS WITH ELECTRONIC CONTROL AND PROTECTION DEVICE

DESIGN FEATURES

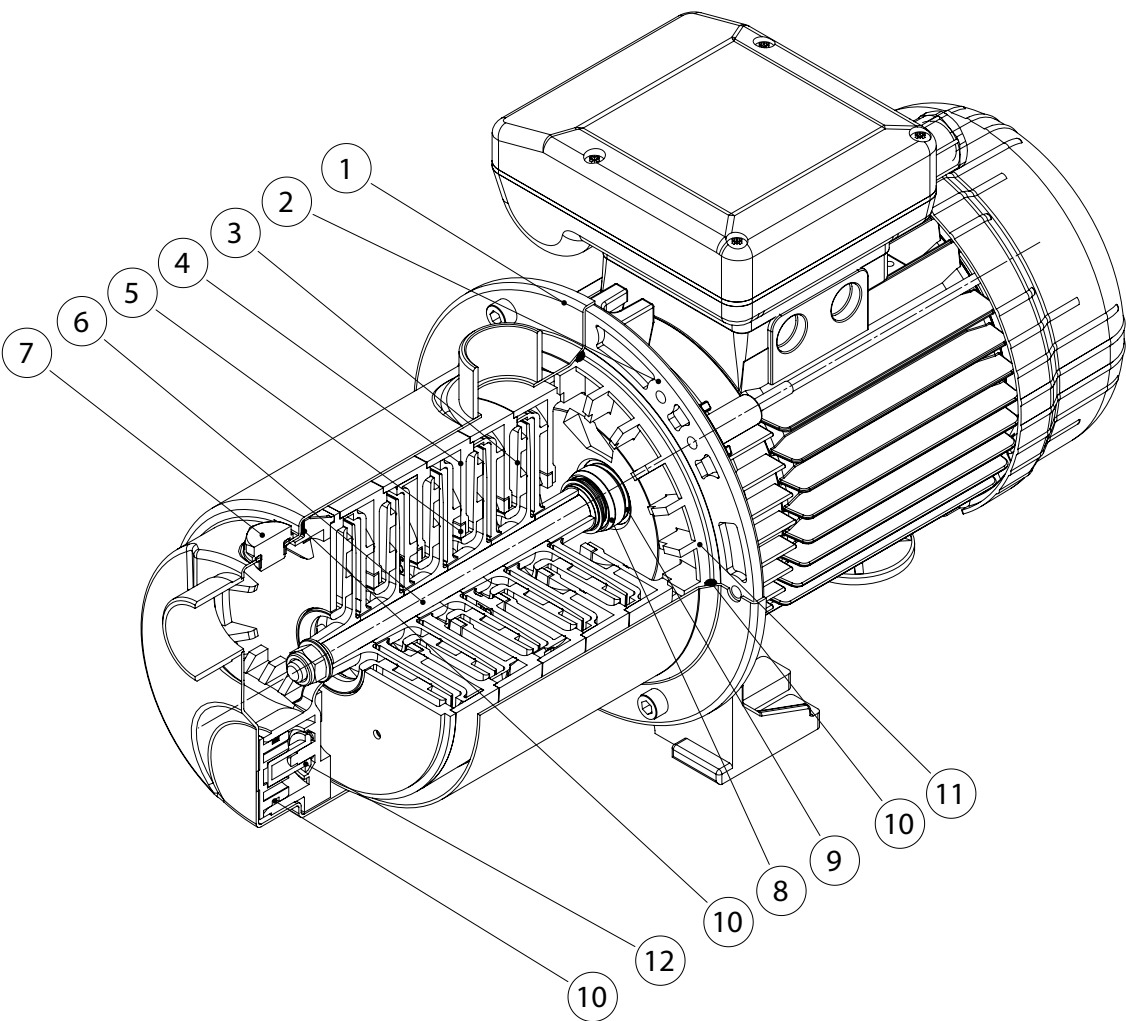


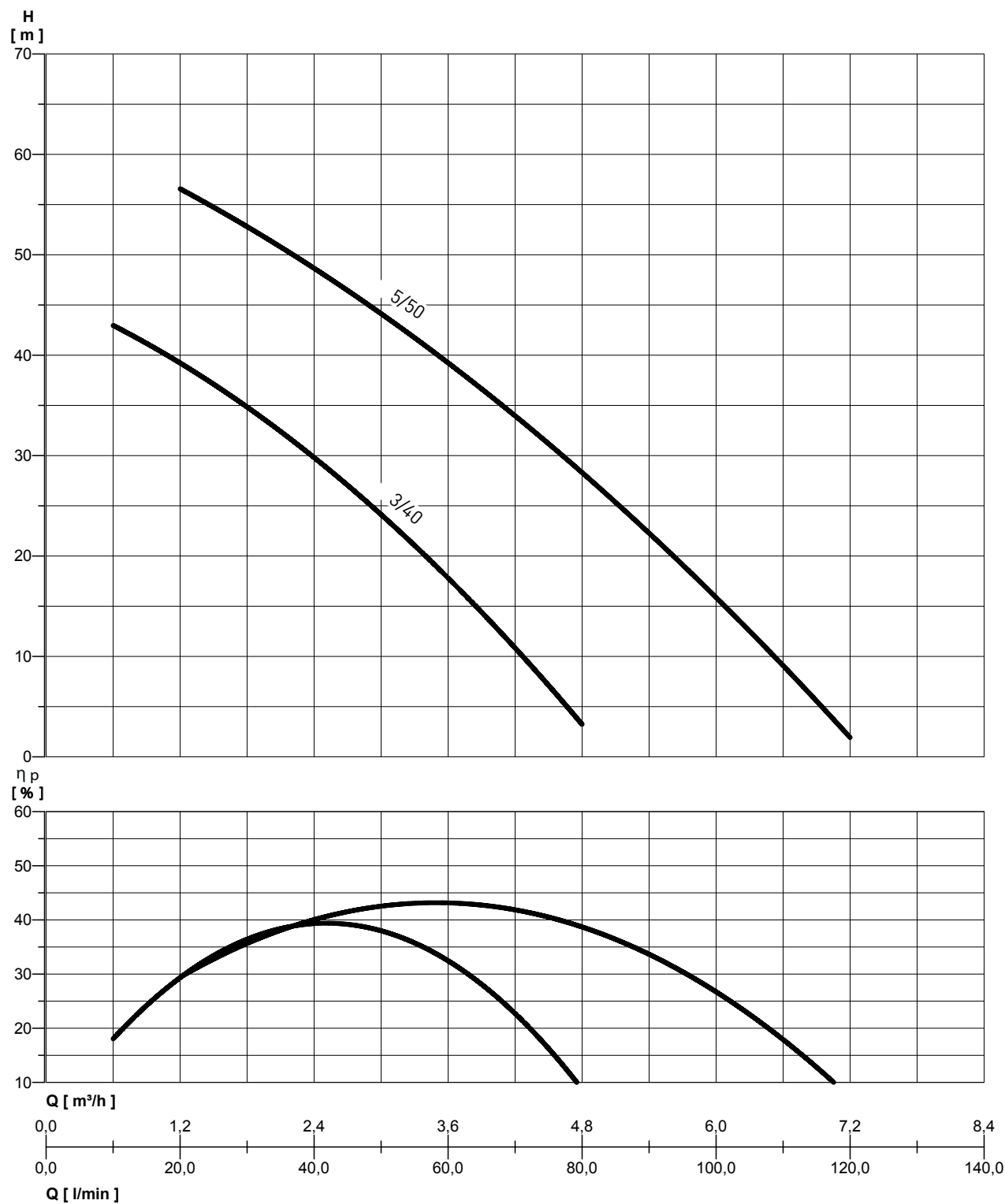
TABLE OF MATERIALS

Ref.	Component	Material
1	Pump body	Stainless steel Europe: EN10088-1 X5CrNi18-10 (1.4301) USA: AISI 304
2	Motor casing	Die-cast aluminium
3	Impeller	Fibreglass reinforced PPO
4	Diffuser	Fibreglass reinforced PPO
5	Wear ring	PTFE
6	Shaft (hydraulic part)	Stainless steel Europe: EN10088-1 X5CrNi18-10 (1.4301) USA: AISI 304
7	Inlet / outlet caps	Stainless steel Europe: EN10088-1 X8CrNiS18-9 (1.4305) USA: AISI 303
8	Mechanical seal	Carbon graphite / NBR / SS Europe: EN10088-1 X5CrNi18-10 (1.4301) USA: AISI 304
9	Counterface	Ceramic / NBR
10	Gaskets	NBR 70 Shore A
11	Seal holder plate	Fibreglass reinforced PPO
12	Self-priming valve	Fibreglass reinforced PPO

NOCCHI FP/Multi EVO-A 3 - 5

ELECTRIC PUMPS WITH ELECTRONIC CONTROL AND PROTECTION DEVICE

HYDRAULIC PERFORMANCE

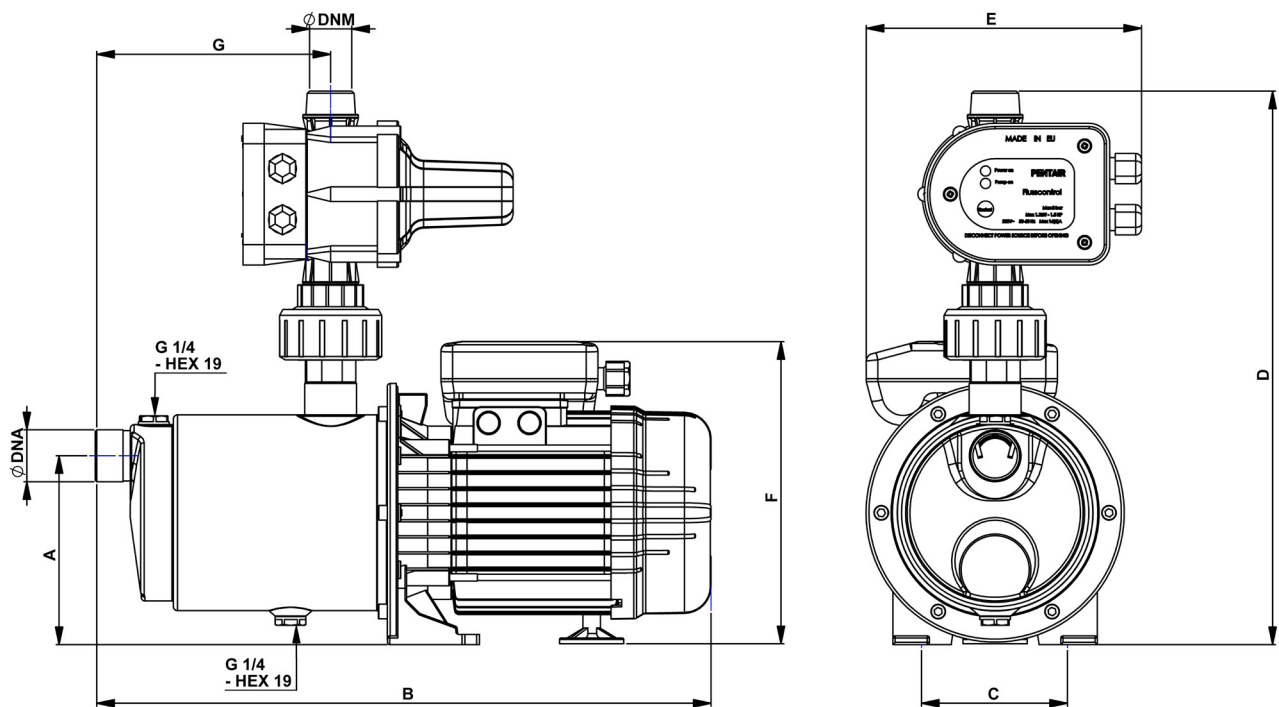


NOCCHI FP/Multi EVO-A 3 - 5

ELECTRIC PUMPS WITH ELECTRONIC CONTROL AND PROTECTION DEVICE

PERFORMANCE TABLE

MODEL	Nominal power (P2)		Absorbed power (P1)		Voltage (V)	In (A)	μF	Q	l/min m³/h	10	20	30	40	50	60	80	100	120
	HP	kW	HP	kW						0,6	1,2	1,8	2,4	3	3,6	4,8	6	7,2
FP/Multi EVO-A 3-40 M	0,74	0,55	1,1	0,8	1 ~ 230	3,7	12,5	total head in metres water column	42,5	39,5	35,5	30	23,5	17,5	3,5			
FP/Multi EVO-A 5-50 M	1,27	0,95	1,8	1,35	1 ~ 230	6,2	20			56	53	49	44,5	39,5	28	15	2,5	



OVERALL DIMENSIONS AND WEIGHTS

MODEL	Dimensions mm.									Weight (Kg)
	A	B	C	D	E	F	G	DNA	DNM	
FP/Multi EVO-A 3-40 M	129	380	100	380	190	180	139	1"	1"	8,5
FP/Multi EVO-A 5-50 M	129	422	100	380	190	180	162	1"	1"	11,8